



ANTS Profiler Version 4  
IIS 6, Windows Server 2003  
23 September 2008

ANTS Profiler can collect performance profiling information about any application hosted in Microsoft Internet Information Server using the “profile a web application hosted in IIS” function. This includes web applications that implement the Windows Communication Foundation (WCF).

**Performance Profiler Settings**

**Application Settings** | Performance Counters

**Choose application type to profile:** ? **Recently saved projects:**

- .NET desktop application
- Windows service
- COM+ server
- ASP.NET web application (hosted in IIS)
- ASP.NET web application (hosted in web development server)

ASP.NET web application (URL):  ?

Profiling mode:  ?

Default timing display:  ?  Profile child processes

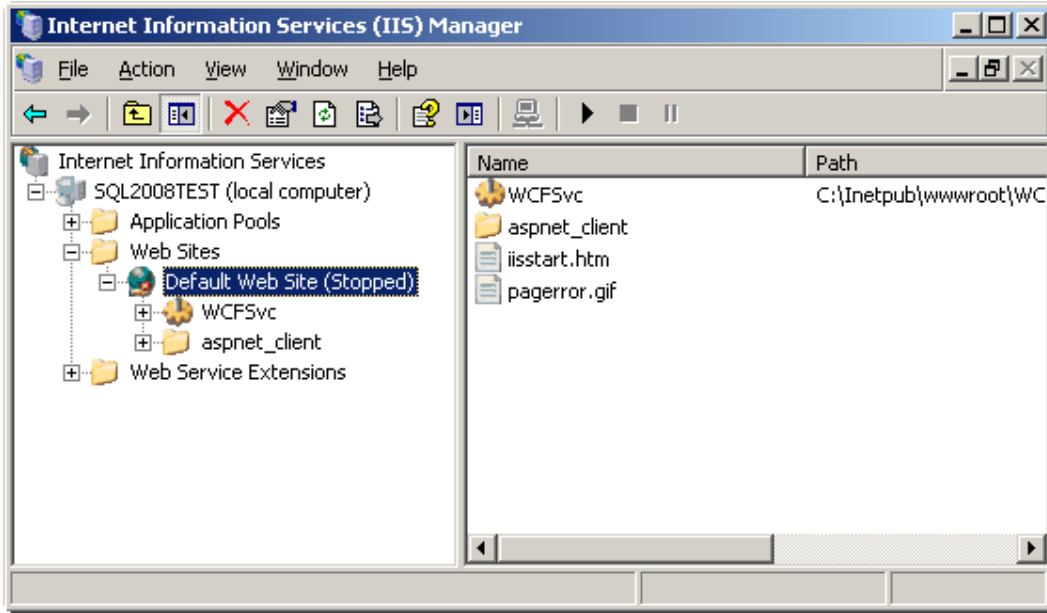
**Server Settings**

IIS version:  ? .NET Framework version:

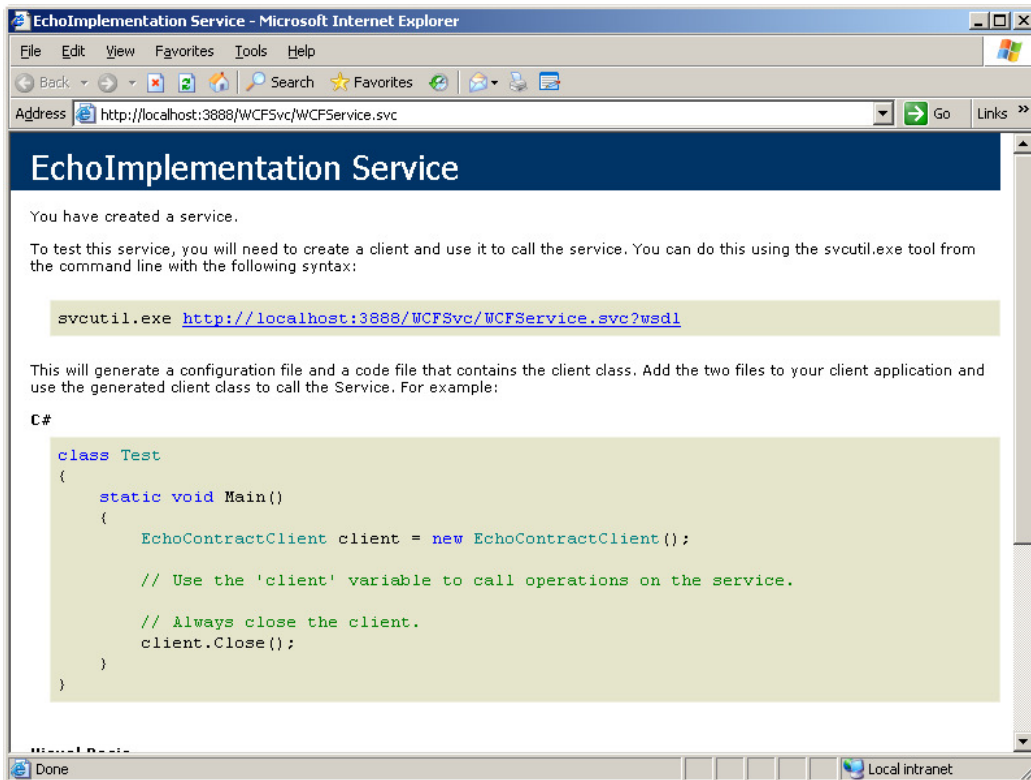
Profile on unused port:  ?

**Profiling will use URL:** http://localhost:3888/WCFsvc/WCFService.svc

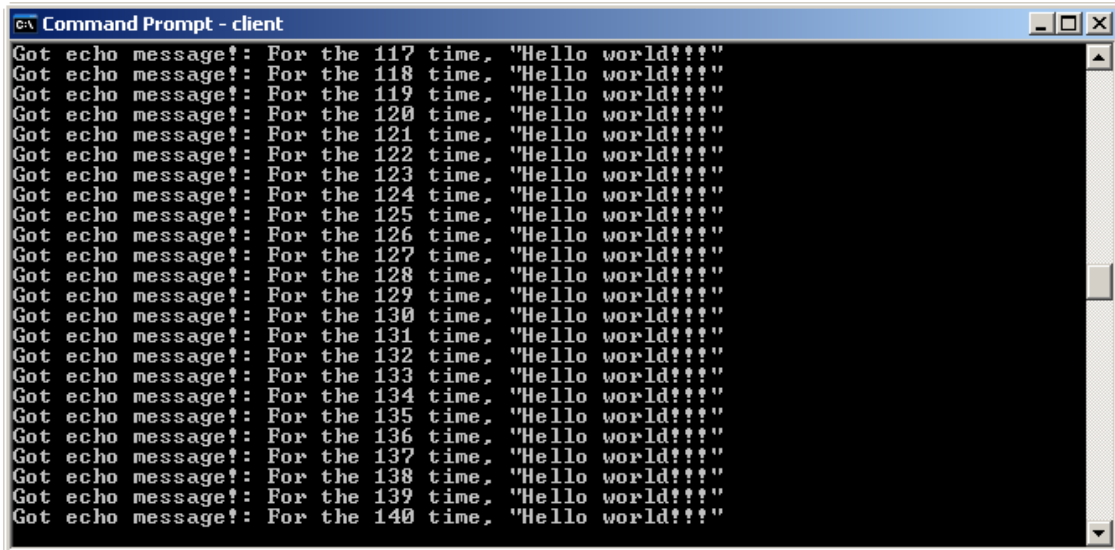
In this example, a WCF web service has been created that answers on TCP port 3888. In order to profile it, the application URL includes port 3888 and the port that ANTS Profiler will use is also set to port 3888. Since IIS is already servicing requests for this WCF service on port 3888, it's important to shut the site down in IIS so that port 3888 is freed for ANTS Profiler.



Once the IIS website is stopped, the "Start Profiling" button in ANTS Profiler can be clicked. This will launch an ASP .NET worker process outside of Internet Information Server that will serve the WCF service on port 3888. When the ASP .NET worker process is started, ANTS Profiler will start a new instance of Microsoft Internet Explorer. The WCF application does not need to be invoked through the web browser in order for ANTS Profiler to collect performance data, so the web browser can be minimized. Closing the web browser will stop ANTS Profiler from profiling.

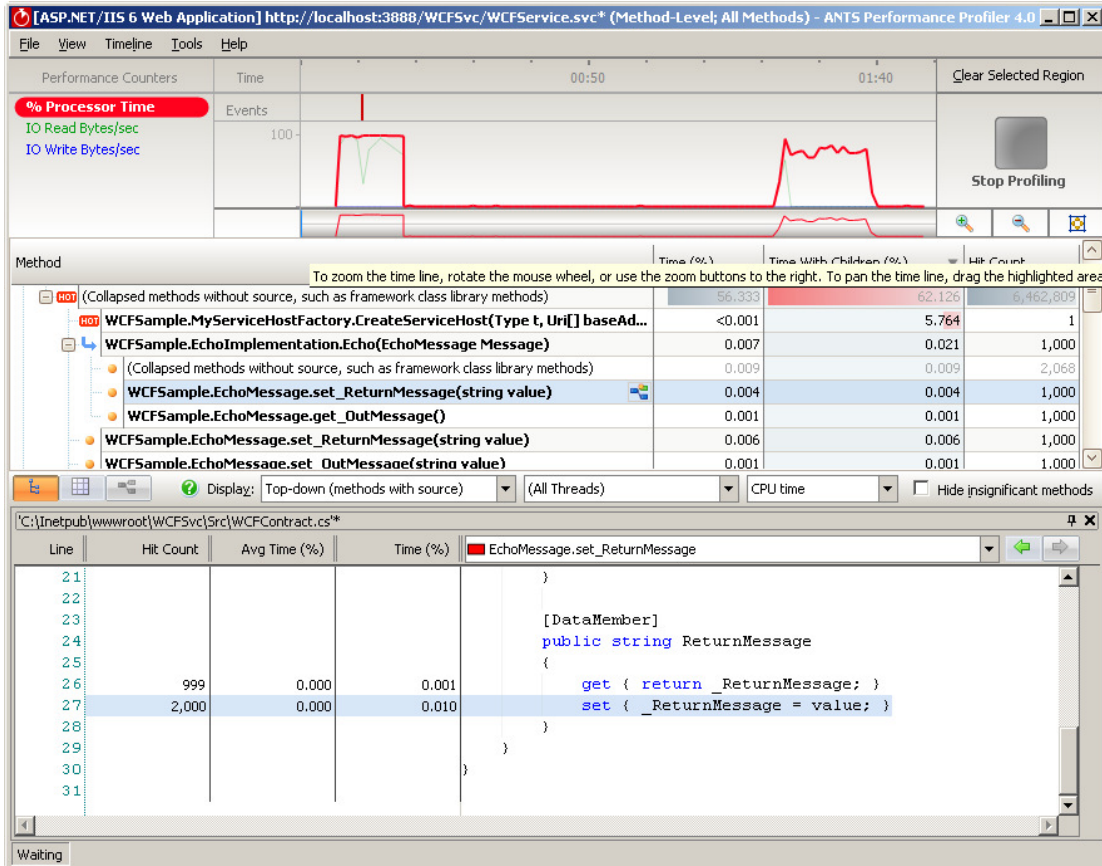


The WCF service is designed to be accessed by a client application that can send requests and read responses from the service. In our case, the server is an echo server that returns the messages sent by the client. The client, in this case, is implemented as a console application. It sends 1,000 messages to the server and returns the messages as they are returned by the server. Because the client expects the server to be available on TCP port 3888, no reconfiguration of the client is necessary.



```
Command Prompt - client
Got echo message!: For the 117 time, "Hello world!!!"
Got echo message!: For the 118 time, "Hello world!!!"
Got echo message!: For the 119 time, "Hello world!!!"
Got echo message!: For the 120 time, "Hello world!!!"
Got echo message!: For the 121 time, "Hello world!!!"
Got echo message!: For the 122 time, "Hello world!!!"
Got echo message!: For the 123 time, "Hello world!!!"
Got echo message!: For the 124 time, "Hello world!!!"
Got echo message!: For the 125 time, "Hello world!!!"
Got echo message!: For the 126 time, "Hello world!!!"
Got echo message!: For the 127 time, "Hello world!!!"
Got echo message!: For the 128 time, "Hello world!!!"
Got echo message!: For the 129 time, "Hello world!!!"
Got echo message!: For the 130 time, "Hello world!!!"
Got echo message!: For the 131 time, "Hello world!!!"
Got echo message!: For the 132 time, "Hello world!!!"
Got echo message!: For the 133 time, "Hello world!!!"
Got echo message!: For the 134 time, "Hello world!!!"
Got echo message!: For the 135 time, "Hello world!!!"
Got echo message!: For the 136 time, "Hello world!!!"
Got echo message!: For the 137 time, "Hello world!!!"
Got echo message!: For the 138 time, "Hello world!!!"
Got echo message!: For the 139 time, "Hello world!!!"
Got echo message!: For the 140 time, "Hello world!!!"
```

Once all of the messages have been echoed, the client exits. When we are finished testing, however, we still must stop the profiling session, either by clicking the "Stop Profiling" button in ANTS Profiler or by closing the instance of Internet Explorer that ANTS Profiler had opened for you.



When the results are examined, we can see that the server methods that echo the client message have been invoked 1,000 times. ANTS Profiler has successfully gathered method and line-level times for the WCF service.