

SQL Data Compare Pro™

Compare and synchronize SQL Server database contents

What is SQL Data Compare Pro?

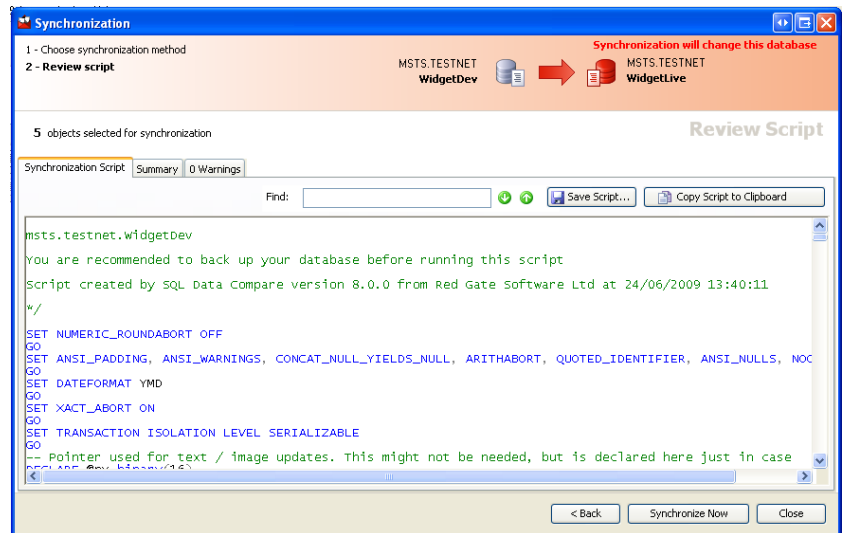


SQL Data Compare Pro is the industry-standard tool for comparing and synchronizing the contents of two databases. Used by over 200,000 DBAs, developers and testers, it is recognized as a very high quality, simple and intuitive, piece of software. It supports all data types and objects in SQL Server 2008, SQL Server 2005, and SQL Server 2000.

Why use SQL Data Compare Pro?

Use SQL Data Compare Pro to ensure the contents of your databases are in synch, or to verify that data migration or replication has been successful. SQL Data Compare Pro automates comparison and synchronization, avoiding the need to manually compare data or generate synchronization scripts.

- SQL Data Compare Pro synchronizes a row, table or entire database – you can also choose data to synchronize on a row-by-row basis. Comparison is based on primary keys, unique indexes or a custom comparison key.
- You can compare and synchronize backups with a database or with another backup, selectively restoring data without performing a restore operation. SQL Data Compare Pro can also perform backups before you synchronize, using either SQL Server native backups or Red Gate SQL Backup.
- SQL Data Compare Pro can create, compare, and synchronize scripts folders, making it easier to keep databases under source control.
- You can compare and synchronize both your schemas and data, moving seamlessly from SQL Compare Pro to SQL Data Compare Pro.
- You can troubleshoot your replication and migration issues. If replication has failed and you need to know why, use SQL Data Compare Pro to identify the differences and synchronize your data, or verify the success of data migration.
- SQL Data Compare Pro is capable of syncing between string, CLR and XML data types, synchronizing CLR data types as text or binary.
- You can synchronize immediately, save a synchronization script, or automate a synchronization with the command line interface.



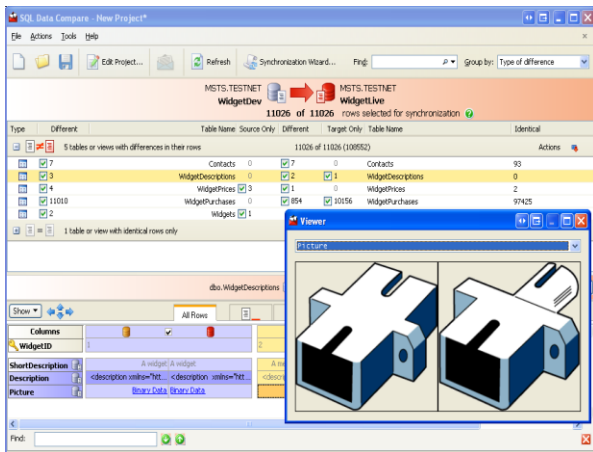
SQL Data Compare automatically creates the synchronization script



ingeniously simple tools

SQL Data Compare Pro™ (continued)

- SQL Data Compare Pro provides mapping features so that you can compare all tables whose data types are compatible. If you are comparing databases, you can also compare views. If your tables or views are very different, - for example if data types are different - Red Gate offers SQL Compare Pro, which will synchronize the structure of two databases.
- You can compare and synchronize large databases – SQL Data Compare Pro has been tested on databases with thousands of tables and gigabytes of data.



How does SQL Data Compare Pro work?

Once the two databases for comparison have been chosen, SQL Data Compare Pro compares them, identifies differences, and generates the script for synchronizing in either direction. The script can be run from SQL Data Compare Pro, allowing you to synchronize the contents of your databases in just a few steps.

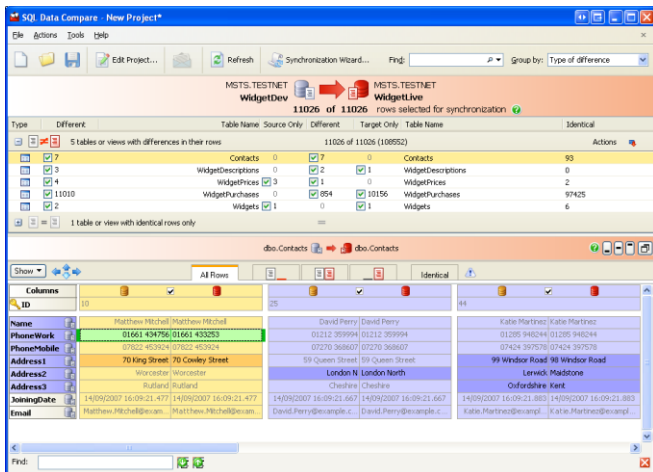
When should I use SQL Data Compare Pro?

Use SQL Data Compare Pro when data is out of synch or when you are moving data between databases. If replication has failed and you need to know why and where there are still differences, use SQL Data Compare Pro to identify those differences and synchronize your data.

SQL Data Compare will compare all data types, including image data

Who should use SQL Data Compare Pro?

This tool is used by DBAs and developers who work with multiple SQL Server databases, need to keep data in synch, and ensure successful data migration or replication. SQL Data Compare Pro is also a valuable tool for software testers.



"I am literally staggered at how much more efficient it is to perform simple data transportation with SQL Data Compare. In some cases, it's up to 10 times faster to move an entire database with SQL Data Compare than it would be with DTS.."

Nick Stansbury, Development Manager, Sage Partners Ltd.

SQL Data Compare makes it easy to see differences between databases

Red Gate Software

Newnham House, Cambridge Business Park, Cambridge, CB4 0WZ, UK
tel: +44 (0) 870 160 0037 toll-free: 1 866 RED GATE (733 4283)
email: sales@red-gate.com web: www.red-gate.com



ingeniously simple tools

SQL Data Compare Pro™ (continued)

Technical specification

SQL Data Compare Pro runs on a user's PC and accesses SQL Servers over the network. SQL Data Compare Pro also includes a command line interface for automating your comparison and synchronization tasks. It is also possible to run SQL Data Compare Pro on a server.

Supported Environments

- SQL Server 2008, SQL Server 2005, SQL Server 2000, and SQL Server 7.0

Operating Requirements

- Windows 2000, Windows XP, Windows Vista, Windows 7, Windows Server 2003 or Windows Server 2008
- SQL Server 2000, 2005 or 2008
- Microsoft .NET Framework 2.0 or later
- MDAC 2.8
- 256 MB RAM
- 200 MB hard disk space
- Minimum screen resolution of 1024x768
- Runs on a user's PC (can also run on a server)

"It's very intuitive. The interface is clean and it's obvious what everything is there for.

I was pleasantly surprised by the speed. I usually hand-code SQL queries when moving databases between environments and doing synchronization and replication checking. With SQL Data Compare, I can save up to several hours for each database.

SQL Data Compare is simple, quick and it saves time. Simply put, it does what it sets out to do."

Jasper Smith, SQL Server MVP

How much does SQL Data Compare Pro cost?

SQL Data Compare Pro costs **\$595**. This provides access to comparison with backups, and the Command Line interface. SQL Data Compare Pro can also be purchased in the SQL Toolbelt - a bundle of all our SQL tools representing a substantial saving over the cost of purchasing the products individually.

SQL Data Compare is also available as SQL Data Compare Standard Edition – a basic version of the tool which allows you to compare and synchronize live databases. The SQL Data Compare Standard Edition costs **\$395**.

➤ SQL Comparison Bundle™

SQL Compare® Standard Edition+ SQL Data Compare Standard Edition+ SQL Dependency Tracker™ Standard Edition, SQL Packager™= **\$695**

➤ SQL Developer Bundle™

SQL Compare Pro + SQL Data Compare Pro + SQL Dependency Tracker + SQL Packager + SQL Prompt Pro + SQL Refactor + SQL Data Generator + SQL Multi Script + SQL Doc + SQL Source Control = **\$1295**

➤ SQL Toolbelt™

SQL Compare Pro + SQL Data Compare Pro + SQL Dependency Tracker + SQL Packager + SQL Prompt Pro + SQL Refactor + SQL Source Control + SQL Backup Pro + SQL Object Level Recovery Native +SQL Data Generator + SQL Multi Script + SQL Doc + SQL Comparison SDK + SQL Response = **\$1995**

Support and upgrades packages are available for 25% of the product's purchase price.

Red Gate Software

Newnham House, Cambridge Business Park, Cambridge, CB4 0WZ, UK
tel: +44 (0) 870 160 0037 toll-free: 1 866 RED GATE (733 4283)
email: sales@red-gate.com web: www.red-gate.com

redgate®

ingeniously simple tools